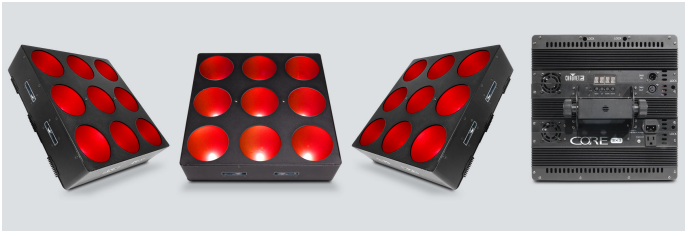




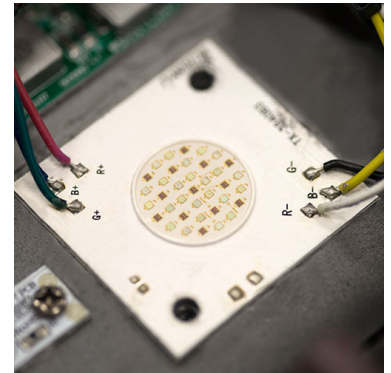
Core 3x3

Core 3x3 combines a pixel-mapping effect and a powerful LED wash. Powered by nine RGB LEDs with chip-on-board (COB) technology, it utilizes a unique reflector cup to produce large pixels of light and create intriguing sweeping and chasing effects. You can easily combine multiple units using built-in coffin locks to construct an impressive array capable of large scale animations and chases.

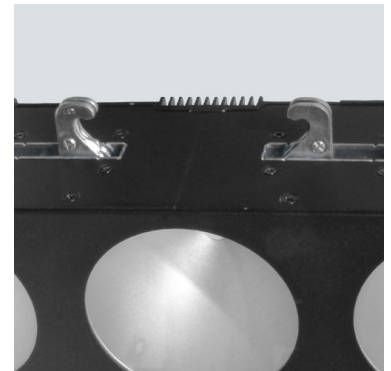


Highlights

- Compact, LED panel designed for use as a pixel mapping effect, blinder or wash light
- Easily trigger built-in automatic and sound activated programs for a stunning show in seconds
- Produce a full spectrum of light with excellent color mixing using COB technology
- Quickly and securely connect multiple fixtures together with built-in coffin locks
- Create animations and video effects with individual LED control
- Withstand the harshness of traveling from gig to gig with a robust housing
- Generate complex looks with ease using ShowXpress™ Pixels
- Achieve flicker-free video operation with high-frequency LED dimming
- Save time running cables and extension cords by power linking multiple units
- Silent operation due to built-in fan control
- Sound-activated programs dance to the beat of the music
- Generate a synchronized show in master/slave mode with easy access to built-in automated programs



Produce a full spectrum of light with excellent color mixing using COB (Chip On Board) technology



Built-in coffin locks

Specifications

- DMX Channels: 3, 5, 9, 27, or 31
- DMX Connectors: 3-pin XLR
- Light Source: 9 LEDs (tri-color RGB) 9 W (1.5 A), 50,000 hours life expectancy
- Strobe Rate: 0 to 20 Hz
- PWM Frequency: 1.1 KHz
- Beam Angle: 47°
- Illuminance: 1,025 lux @ 2 m
- Power Linking: 3 units @ 120 V; 7 units @ 230 V
- Input Voltage: 100 to 240 VAC, 50/60 Hz (auto-ranging)
- Power and Current: 226 W, 1.9 A @ 120 V, 60 Hz 226 W, 0.9 A @ 230 V, 50 Hz
- Weight: 13.6 lb (6.2 kg)
- Size: 6.2 x 13.6 x 13.6 in (156 x 344 x 344 mm)
- Approvals: CE

What's Included

- Power cord
- Allen key (5 mm)
- Hanging bracket with mounting hardware
- Quick Reference Guide
- Warranty card